

A decorative lantern with a black metal frame and two arched glass panels, one glowing red and the other glowing yellow. It hangs from a string of warm white lights against a dark, textured background.

# FOSSE TRINITY NEWS

DECEMBER 2025  
JANUARY 2026

# Forsey and Son

ESTABLISHED 1946

INDEPENDENT FAMILY FUNERAL DIRECTORS  
MEMORIAL MASONS • PAYMENT PLANS

**Willowfields, Lowside Lane,  
Glastonbury BA6 9GY  
01458 831020**

Also:

28 High Street, Butleigh, Glastonbury  
Somerset BA6 8SY  
01458 850654 or Street 01458 443677

Pound Pool, Somerton  
Somerset TA11 6LZ  
01458 272297 or Langport 01458 250509

[www.forseyandson.co.uk](http://www.forseyandson.co.uk)



**CLARE TORDAY YOGA**  
*Hatha & Vinyasa*

**Monday 9.15am Galhampton Hall**

**Monday 6 pm Caryford Hall**

**Tuesday 9am Caryford Hall**

**Thursday 9.15am Ditcheat Hall**

**Thursday 10.45am Ditcheat Hall - *Chair Stretch***

For details please contact Clare Torday  
[claretorday@gmail.com](mailto:claretorday@gmail.com)  
07843 079 209  
[www.somerset-yogaspacespace.com](http://www.somerset-yogaspacespace.com)



## Say hello to ultrafast fibre



Register your  
interest!



**Lightning fast**

Download speeds  
up to 900 Mbps



**Reliable connection**

Zero buffering or  
annoying drop outs



**Local support**

A friendly support  
team based in Dorset

Let's get your home connected. Visit [wessexinternet.com](http://wessexinternet.com)

## This Month

Advertisers Index	50
Alhampton Weather	18
British Legion	28
Bruton Choral Christmas	38
Christmas Coffee Morning	5
Church Rotas	45
Church Services	47
Crib Service	35
Dahlia Support	19
Diary dates	4
Directory	48
Ditchheat Big Screen	15/34
Ditchheat Book Group	29
Ditchheat frost fae	34
Ditchheat PC Notes	40
Ditchheat School	26
East Pennard Coffee Drop-in	30/31
From the Archives	14
Frost Fair	34
Gardening	10
Natural World	20
One Hundred Club	5
Pylle Christmas Celebration	6
Pylle Village Hall Hire	39
Pylle Village meal	39
Rector's Note	46
Recycling Christmas Trees	27
Rendezvous	15
Sally's Christmas Bingo	23
Sax and Sparkle	30
Village Lunch	12
Walk your Dog!	37
Wildlife Group Update	24

## **The Editor's Letter**

Freely admit to making the most of the tradition of kissing under the mistletoe but never knew where it originated. The word comes from the Anglo Saxon 'mistel' and 'tan' which roughly translates to 'dung on a stick' - a pretty unappealing start. The kissing bit is thought to come from a Norse myth; after her son, Baldur, was killed by an arrow with a mistletoe shaft, Norse goddess Frigga declared the plant a symbol of love and vowed to kiss everyone who passed under it. Get to it!

Plenty of Christmas cheer on offer, mostly for good causes, so have a look at the Diary Dates on page 4 and get planning:

Caffeine/cake, lunch and craft opportunities at East Pennard, Pylle and Ditchheat; also at Ditchheat the Frost Fair, Bingo, Bridget Jones on the Big Screen, buy a dahlia, a carol service and a crib service. For music lovers there's a concert at Bruton and some 'Sax and Sparkle' in the tin tabernacle in Alhampton.

You can help a great local charity, St Margaret's Hospice, by letting it recycle your Christmas tree (P27) or taking up its challenge to rack up 100 miles with your canine (P37).

The whole FTN team wishes you all a happy and a hopeful Christmas and New Year.

*Margy Cockburn Tim Sanders*

Front cover: The Lantern by Rose Hubbard ©.

Please send your cover photos to: [editor@fossetrinitynews.co.uk](mailto:editor@fossetrinitynews.co.uk).

The Fosse Trinity News is a community magazine delivered free to all households in Ditchheat, Alhampton, East Pennard and Pylle and online: [www.fossetrinitynews.co.uk](http://www.fossetrinitynews.co.uk).

We reserve the right to edit but welcome contributions from everyone in the community.

Editorial and adverts to be received by the 10<sup>th</sup> of month preceding the issue.

Contact: [editor@fossetrinitynews.co.uk](mailto:editor@fossetrinitynews.co.uk) or [adverts@fossetrinitynews.co.uk](mailto:adverts@fossetrinitynews.co.uk).

Refer to the Legal Declarations at the end of the magazine on using copyrighted material.

## Dates for your Diary



### Regular Events

Weekly Monthly			
<b>Mon</b>	✓	Pilates (9.00)	Michelle XXXXXX
	✓	✓ 4 <sup>th</sup> Crafternoon (2.00)	Marion XXXXXX
<b>Tue</b>		✓ 2 <sup>nd</sup> Rendezvous (10.00)	Lynda XXXXXX
		✓ 1 <sup>st</sup> , 3 <sup>rd</sup> Ditchat Art Group (10.00)	Liz & Stewart XXXXXX
	✓	East Pennard Drop In	Frances XXXXXX
		Last Tues Village Lunch	Jessica XXXXXX
		2 <sup>nd</sup> Fosseyway Gardening	Barbara XXXXXX
<b>Wed</b>		Ditchat History Group	Roger XXXXXX
	✓	Badminton	Sam XXXXXX
<b>Thu</b>	✓	Ditchat Short Mat Bowls (7.00)	Martin XXXXXX
<b>Fri</b>		Yoga (9.15)	Clare XXXXXX
		Chair Stretch for Seniors (10.45)	Clare XXXXXX
<b>Sat</b>		✓ 2 <sup>nd</sup> Folk Dance Club (7.00)	Ama/Peter XXXXXX
	✓	✓ 2 <sup>nd</sup> Men's Breakfast (8.30)	Roger XXXXXX
		Yoga (9.00)	Clare XXXXXX

### December

Sat 6 <sup>th</sup> 10.00am	Dahlia Support / Frost Fair	P19 / P34
Sat 6 <sup>th</sup> 10.00am	Coffee Morning, East Pennard	P5
Mon 8 <sup>th</sup> 6.30pm	Sally's Christmas Bingo	P23
Tue 9 <sup>th</sup> 10.00am	Rendezvous	Lynda XXXXXX P15
Tue 11 <sup>th</sup> 12.30pm	Village Christmas Lunch	Jessica XXXXXX P12
Sat 13 <sup>th</sup> 5.30pm	Pylle Christmas Event	P6
Mon 15 <sup>th</sup> 5.30/7.30pm	Sax and Sparkle	P30/31
Mon 15 <sup>th</sup> 7.30pm	Bruton Choral Concert, Bruton	P38
Fri 21 <sup>st</sup> 7.30pm	Ditchat Big Screen – Bridget Jones Mad About the Boy	P34
Wed 24 <sup>th</sup> 4.30pm	Crib Service, Ditchat Church	P35

### January

Tue 13 <sup>th</sup> 10.00am	Rendezvous	Lynda XXXXXX P15
Fri 16 <sup>th</sup> 7.30pm	Ditchat Big Screen TBA	P15
Tue 27 <sup>th</sup> 12.30pm	Village Lunch	Jessica XXXXXX P12

## **XMAS COFFEE MORNING**

TO BE HELD IN AID OF EAST PENNARD VILLAGE HALL FUNDS

BA4 6TU

**SATURDAY DECEMBER 6TH. 2025**

**10 am to 12 Noon**

Coffee, tea, cakes, Xmas stall, raffle, etc.

Raffle prizes needed and cakes if anyone wishes to make some!

Enquiries contact: Anna Gifford XXXXXX

Please come and support your Hall - thank you.



### **November 100 Club Draw**

The results for the November draw are as follows:

Ball 29	£100	Jo Curtis
Ball 28	£50	Heather Store
Ball 41	£25	Judith Rowsell

St Margaret's Hospice Care

**Light up a Life** 2025

**Will you remember a loved one with a star this winter?**

By dedicating a star in memory of a loved one, you will help St Margaret's continue caring for families in Somerset when it matters most.

 **Dedicate a star today**

Please visit our website:  
[st-margarets-hospice.org.uk/light-up-a-life](http://st-margarets-hospice.org.uk/light-up-a-life)

Registered charity number: 279673

## **Important! Change Of Date!**

**Pylle Village Hall Committee  
warmly invites you to a  
FREE EVENT for all the family**



**Saturday 13<sup>th</sup> December from 5.30**

***Kick off Christmas at Pylle Village Hall!***

### **A Christmas Table Decoration**

A hands-on session for all ages. Take away your free decoration for your Christmas table.

### **Children's Christmas craft activity.**

For all ages. Take away a Christmas gift.

### **Soup and mince pies!**

Followed by a **Christmas Singalong** to all the old favourites and some carols too.

Blow those winter cobwebs away!

Please email Jay **ONLY** if you would like to make a Christmas Table Decoration.  
Otherwise just come along!

**Enquiries about activities –**

**Jay Smith XXXXXX**

**Or see our Facebook page – Pylle Village Hall**





---

# WRAXALL VINEYARD

S O M E R S E T

Restaurant

Wine bar

Tours & Tastings

Events On The Vines

Private Dining

Cottages & Shepherds Huts

---

**THE VIEW @ WRAXALL**

WEDNESDAY, SATURDAY & SUNDAY 10:00AM - 6:00PM

THURSDAY 10:00AM-10:00PM (STEAK NIGHT EVERY THURSDAY)

FRIDAY 10:00AM - 10:00 PM

For more information and to book, head over to our what's on page

# The Most Thorough Cleaning You've Ever Seen Or Its Free!!

**Carpets** Advanced Low Moisture System. Superb results and **dry in as little as 30mins!** Your neighbours will think you've got new.

**Upholstery** Fabric and leather upholstery can look like new and smell fresh again.

**Oriental & Area Rugs** Off site cleaning facility for superior results. **Free Collection & Delivery.**

**Hard Flooring** Restorative cleaning and sealing of Natural Stone, Ceramic & Porcelain Tiles & Grout, Wood & Laminates Vinyl, Karndean & Amtico etc.

**Re-polishing** of limestone, travertine and marble flooring and worktops.



[www.tlcbath.co.uk](http://www.tlcbath.co.uk)

## What We Give Others Can't

- \* **Phone answered live** - 9 to 5 Mon - Fri.
- \* **Value For Money** - You get what you pay for. We may not be cheapest, (**we won't use the tricks necessary to be so!**)
- \* **Accurate Appointment Times**  
No more waiting around! If we are going to be 10 or more mins late, we ring ahead, keeping you informed
- \* **100% Money Back Guarantee** We are not perfect! If a spot re-appears or you're unhappy, we'll return and re-clean free of charge. If you are still unhappy, your payment will not be accepted.

**For Free, Friendly Advice**

**Call 01761 235600**

TLC (Bath) Ltd,  
Unit 33, Old Mills Ind Est,  
Paulton BS39 7SU

[info@tlcbath.co.uk](mailto:info@tlcbath.co.uk)

## Dorset Delights Catering

Family run since 2010, based in North Cadbury, Somerset

Event Catering for all Occasions

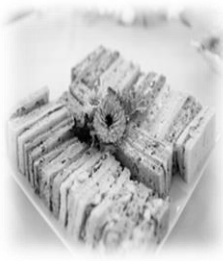
Funeral Teas, Anniversary Celebrations, Drinks Parties, Garden Parties

Buffets dropped off and served

[www.dorsetdelightscatering.co.uk](http://www.dorsetdelightscatering.co.uk)

Contact Alice 07783 928532

Louise 07743 780609





## **Linda Medhurst**

### **Seamstress**

Bespoke curtains, cushions,  
blinds, home furnishings  
minor alterations/repairs

Tel: 01749 831264

Mob: 07951 638273

Email: [lamedhurst@btinternet.com](mailto:lamedhurst@btinternet.com)

Facebook "Sewing by Linda"

## **Driving Instructor in Your Area**

### **Richard's Driving Tuition**

Competitive rates.

Please email:

[richardfensham@hotmail.com](mailto:richardfensham@hotmail.com)

Or text: 07835 413917

## **Wills, Trusts, Probate, Power of Attorney**

Our professional caring team is here to ensure your Will stays up-to-date and protects your loved ones.

- Decide who inherits your assets.
- Mitigate costs such as Inheritance Tax & Care Fees
- Appoint guardians for minor children.
- Reduce the risk of family disputes.
- Protect your partner if you're not married.

**Purely  
Probate**  
Solicitors

**01458 850146**

[purelyprobate.co.uk](http://purelyprobate.co.uk)

Lower Farm Offices,  
West Bradley,  
Somerset BA6 8LT

# **Osborne Tree Services**

*All aspects of tree surgery*

Tree Shaping, Pollarding, Felling,  
Hedge Trimming, Stump Removal,  
Garden Clearance

*Fully insured NPTC qualified  
National Certificate in Arboriculture*



**Jody Osborne**

North Brewham, Bruton, Somerset

**07896 813934**

[osbometreeservices@hotmail.co.uk](mailto:osbometreeservices@hotmail.co.uk)

## Gardening

Charles is unexpectedly away this month but, not wanting to do without a dose of his inspiration, we offer his brief summary of just what the No Dig method is and some seasonal examples of it in action.

### What is no dig

No dig means two things:

*First*, leave soil undisturbed as much as is practical. You may occasionally need to use a spade or trowel, for example when cutting out bramble roots, making a hole for planting trees, or planting seed potatoes.

*Second* is to feed the masses of soil life, with organic matter on the surface. This is how it happens in nature, where old leaves and woody materials are always decaying on top of the ground.



*A new no-dig bed on weed (cardboard is great as a cover and decomposes when it's done its job). Created January 2025 and it cropped many raspberries through Summer and Autumn.*

For growing annual plants such as most vegetables, especially in damp climates, I recommend using compost as the surface mulch, rather than undecomposed materials. This speeds up the increase in fertility needed by vegetables, and reduces habitat for slugs.

So, mulch as much as you can but don't sow in the new year – as the saying goes 'sow in January and you won't have anything to eat'.



*Newly-mulched beds with 2cm of different composts on them and woodchip on the 30cm-wide woodchip paths.*



*Savoy cabbage can freeze and survive*

*Added just for fun - the outcome of the summer-planted whisky barrels, filled with 70% compost and soil, 5cm holes drilled in the sides and bottom, and a mix of vegetables and herbs planted - lettuce, endive, kohlrabi, chicory, fennel, sage, sorrel, strawberries  
Practically a Christmas tree...*





## ***DITCHEAT VILLAGE CHRISTMAS LUNCH***

***The Christmas village lunch will take place on Thursday 11<sup>th</sup>  
December at Ditchheat Jubilee Hall at 12.30pm.***

***The cost will be £10.00***

***Booking early is essential - contact either Jessica (XXXXXX) or Vee  
(XXXXXX) as soon as possible***

---

### **Menu for 27<sup>th</sup> January 2026**

£6.00 per person.

Bean Casserole

Pheasant Casserole

Beef Casserole

Selection of Puddings Tea or Coffee.

Book via Jessica or Vee (as above) by the previous Wednesday

Raffle as usual - any prizes will be welcome

## **Ditchheat Village Lunch celebrates 20 years in January**

We started in the Church Rooms, with people bringing their own crockery and cutlery but, despite keeping the cost low, we gradually bought our own using surplus funds; with increasing numbers we then moved to the Jubilee Hall.

With the exception of pandemic lock down the lunch has continued to be held on the last Tuesday of the month for 10 months of the year.

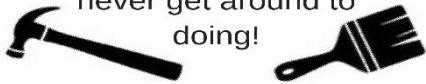
Once we'd accumulated all the equipment we needed, using surplus lunch money and proceeds from a monthly raffle, we were then able to support a range of charities: The Julian Trust Night Shelter in Bristol, St.Margaret's Hospice, Dorset & Somerset Air Ambulance, Haiti Appeal, Crisis for Christmas, Somer Valley Foodbank, Salvation Army Foodbank, British Redcross Ukrainian Appeal, UNICEF Children in Crisis in Gaza, also Ditchheat School and the FTN magazine. We have so far raised £8,623.

The Lunch is run by a team of volunteers who meet twice yearly to plan the menu then cook in their own homes. We welcome all ages to the lunch and are always happy for offers of help - with cooking and/or serving on the day!



# Odd Jobs

For all those jobs you  
never get around to  
doing!



General Household and Garden  
Maintenance inc. Lawn Mowing  
(4x4 Ride on with high grass mulch  
deck or collector), Fencing,  
Removals and Deliveries  
(Large, Long Wheelbase Van)



Don't Delay, Ring Today  
Alistair Gillard

**Tel: 01749 347 331**

**Mob: 07977 054 036**

Email: gillardalistair66@gmail.com

## ADEPPTS

**Mid Somerset Car Scheme Partnership  
member**

Alhampton, Ditcheat, East Pennard and Pyllle  
Transport Scheme

### **PROBLEM WITH TRANSPORT?**

**We will try to help**

Ring Vee Lees, on  
**01749 860542**

A. TREVENEN PASCOE  
BSc. (Hons) Ost. Med. ND.

## **OSTEOPATH**

42 High Street  
Shepton Mallet  
Somerset  
BA4 5AS

Tel. (01749) 342594

PPP/AXA and BUPA recognised



## LODESTONE

Property Sales, Lettings & Advice

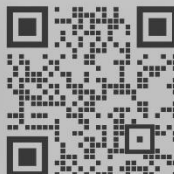
“We are very grateful for the outstanding service –  
the best estate agents I have come across in terms of  
communication, support and marketing know-how.”

Mr M Deacon, July 2025

Covering Somerset & Dorset   

**01749 605099**

Fry's Halt, Bruton, BA10 0EH  
bruton@lodestoneproperty.co.uk  
lodestoneproperty.co.uk





## From the Archives



These picture postcards were produced around 1900 and attributable to *Frank Higdon, Day & Electric Light Studio, 80, High Street, Street*. It is wonderful the amount of pleasure a dozen photographs can give.

Frank was brought up in East Pennard

Roger Yeoman



**January 16<sup>th</sup> – film to be announced, watch out for the advertising.**

**Projectionist needed for Big Screen showings. Please contact  
Tony Pearse at XXXXXX to find out what it involves.**

## **RENDEZVOUS**

**Tuesday, 9<sup>th</sup> December  
and 13<sup>th</sup> January 2026\***

**10 – 11:30 am**

**Jubilee Village Hall  
Ditcheat**

**coffee, cake, CHRISTMAS RAFFLE, stalls  
and 100 club - everyone welcome**

**contact Lynda XXXXXX**



## **Warm Welcome Heating Services**

- Servicing and Repair
- Boilers, AGA's and Rayburns
- Gas, Oil and LPG

**(01963) 440 341**

service@wwheating.co.uk



## **Mike Doyle Home Maintenance**

All types of property maintenance undertaken including:

- Painting and Decorating
  - Kitchen and Bathroom Tiling
  - Wood/Laminate Floor Laying
  - Wooden Decking
  - Fencing
  - Insurance
- Quotes/Work Undertaken

**07876421255**

e-mail:mad-doyle@hotmail.co.uk

## **PHILIP SAUNDERS PRIVATE HIRE DRIVER Based in Ditchat**

Airports and Long Distance Trips

Travel in Comfort

Reliable

Prompt

**Very Competitive Rates**

Tel: 07855 588128



## **Thomas Kenrick Re-pointing**



Re-Pointing Specialist. Building Conservation. Stone Masonry.

01749 831568 / 07746 218062

**www.Repointing Somerset.co.uk**



# MARK CURTIS ROOFING LTD.

## ESTABLISHED IN 1986

**BASED IN SOMERSET & DEVON**

**ALL ASPECTS OF ROOFING**

**TILING**

**SLATING**

**LOFT CONVERSIONS**

**GENERAL BUILDING**

**EXTENSIONS**

**REFURBISHMENTS**

**ALL TYPES OF FLAT ROOFING**

**FELT**

**FIBREGLOSS**

**SINGLE PLY**

**MOBILE- 07702 820794**

**HOME- 01404 891071**

**WWW.MARKCURTISROOFING.CO.UK**





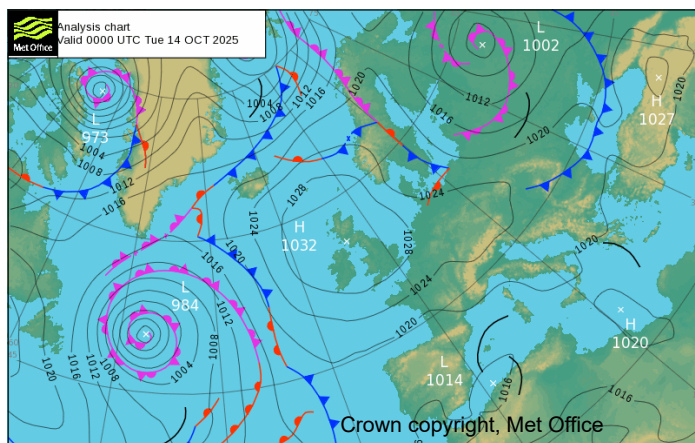
## Alhampton Weather – October 2025

This was the dulllest October for nearly 60 years. An anti-cyclone settled over the country for a fortnight bookended by Storm Amy passing through the north of the country and Storm Benjamin to the south. The map below shows the high pressure that settled over the country causing a temperature inversion. This happens when a layer of warm air settles over a cold layer at ground level, rather than the normal process of cooling as height increases. A weather map like this in summer would produce fine, sunny weather, but with the ground cooling off as the autumn progressed it set up conditions for a blanket of cloud that hardly moved. Yeovilton recorded only 76 hours of sun in the month, much less than normal. However, these stable conditions ensured a relatively dry month, only 64mms, which is appreciably less than normal for October where more than 100mms is usual.

The big weather story of the month was Hurricane Melissa, which caused havoc to Jamaica and Cuba. Reports of winds of 185 mph shortly before the hurricane hit Jamaica are hard to comprehend. The minimum pressure reading, one indication of how deep and strong the storm was, reached 872 millibars. To put this in perspective the biggest storm that we had in the winter of 2023/24 was Henrik, which registered about 970 millibars.

Looking ahead the damp, relatively mild weather is set to continue for well into November. The long-range forecasts are giving some confidence to a change in the weather towards the end of November with high pressure becoming more dominant. If this happens it will be drier, but also colder with overnight frosts for a while before returning to relatively mild conditions – a white Christmas does not seem likely!

John Clarke





## Dahlia support for Fosse Trinity News



If you like dahlias *and* the FTN *and* would like to help it raise funds...my name is Brian Jaques. I live at Silver Birch on the Wraxall Road in Ditcheat and I like gardening. This year I grew, amongst other things, quite a few *Bishop's Children* dahlias from seed. The parent dahlia is *Bishop of Llandaff*, a glorious, floriferous, red single flower and its progeny are mostly red or orange-red with an occasional yellow or white.

Now that their season has ended I have cut down the stems and foliage and dug up the tubers. If kept frost-free the tubers will

sprout new growth in Spring, ready to be planted and repeat the show next year. Come to my garden and buy a few for £1 each. All proceeds to FTN. Or just come and have a gardening chat.

**Saturday December 6th.**

**Tubers available between 10am to 12 pm and 2 to 4 pm**

**ch** ✓

CITY & GUILDS  
Dulux  
IPAF  
f

CARPENTRY - PAINTING - DECORATING - TILING  
MAINTENANCE - RENOVATIONS - CHERRY PICKER HIRE

(TEL) 07703 976707  
(E-MAIL) [info@ch-maintenance.net](mailto:info@ch-maintenance.net)  
(WEB) [www.ch-maintenance.net](http://www.ch-maintenance.net)

## The Natural World

Writing these notes about three weeks before the FTN is circulated does present problems from time to time. I mentioned that blue fin tuna are being seen off the British coast and before it was published, Hamsa Yaseen mentioned it in his excellent BBC series. Thanks, Hamsa.

There isn't another FTN until February, so you'll have to forgive me for mentioning Christmas, and let's hope that Hamsa doesn't get wind of what I'm writing this time. Christmas is a Christian festival, but other elements have been tied up with it for centuries. Depending on your sources, there are around 900 species of mistletoe worldwide. In Norse mythology, the goddess Frigga declared mistletoe a symbol of love after her son Balder, who had been killed by an arrow, made from a mistletoe branch, was resurrected, and it was believed that two people who kissed under the mistletoe were under Frigga's blessing. The tradition was heavily popularized in the 19th century through literature and became more widespread, as was the case with removing a berry with every kiss, until all the berries were gone, and then the kissing had to stop. It was the premise that mistletoe ensured peace and love that eventually aligned it with a festival celebrating the same ethos. Mistle thrushes get their name from the simple fact that they love eating the berries.



It's a similar story with holly, which due to a blend of pagan and Christian traditions, and its evergreen nature, was seen to be a symbol of eternal life. As the traditions melded, the thorns were seen to symbolise Christ's crown of thorns, and the red berries represented his blood. This symbolism combined with pagan belief that evergreens repel evil spirits during the cold months made holly an integral part of the festive season. There was

a tradition in the Midlands that whichever entered the house first would dictate whether the males or females would rule the home for the following year – although bringing either inside before Christmas Eve is again said to be very unlucky.

When it comes to wildlife at Christmas, we tend not to think much further than the robin these days. There are mentions of the red breast symbolising the blood of Christ, but when it comes to Christmas, the story is simpler. Victorian postmen wore red tunics and were nicknamed 'robin redbreasts', and so the robin began appearing on Christmas cards, which also rose in popularity with ability to send them by post, but with a second class stamp now costing 87p, I can only see their gradual demise.



The turkey, which we now consider to be standard fare at Christmas, was introduced to Europe from North America as early as the 16<sup>th</sup> century, but it wasn't until Charles Dickens made Ebenezer Scrooge give the Cratchits a turkey for Christmas, that the idea started to catch on and, even then, they were too expensive for most. The popular choice

for many years had been to serve a goose. After all, for country folk, they were reasonably freely available. When I was a boy, both were outside many people's budget, and (sob, sob) we had to make do with a chicken, and home-grown veg.

Have a great Christmas, and don't forget to feed the birds in your garden during the colder weather. They will repay you with their presence (not presents sadly).

*Images from Wikipedia Commons*

Stewart Gould – XXXXXX





**Warm Fires, Festive Events, and a big Welcome  
Await you at The Ally This December!**

## **December**

**Friday 5th** – The Ally welcomes in the Festive Season with Lights On **5pm**

**Saturday 6th – 7th** – Christmas Wreath Making **11am – 1pm**

**Thursday 11th** – Jingle & Mingle Christmas Jumper Day

**Saturday 13th** – Brunch **11am – 2:30pm**

We welcome back Oxford's Capella group 'Quintessence' for Christmas in  
Harmony! **2pm – 4pm**

Santa Visit for our younger community members **5pm – 6pm**, stay for supper,  
Family Menu available courtesy of Alhampton Dining

**Thursday 18th** – Toad Patrol Return to the Ally from **8:30pm**

**Wednesday 31st** – Welcome the New Year in at the Ally,

**Opening Hours between Christmas and New Year 12noon-12midnight**

## **January**

**January 1st – 2nd** – Closed (Taking a Break)

**Saturday 3rd** – Pub Open and Alhampton Dining resumes service.

**Sunday, 25th** – Burn's Night, booking through Alhampton Dining

**Wednesday 28th** – First Quiz Night of 2026



These local legends will be returning to the Ally after a sold out World Tour, playing iconic venues across Sutton, Bruton and Horsington.

Forged in the creative fires of Alhampton they aim to deliver an evening of great music and festive fun bringing their unique mix of rock and good vibes to our cosy community pub.

Join us on **Thursday, 18th December** for a fantastic night of live music with Toad Patrol. Music kicks off at 8:30pm, arrive early to grab a drink, a bowl of chilli and a good spot!

Great tunes, great beer, great food, great company, what more could you want?

**The Alhampton Inn – your community pub**

---

## **Sally's Christmas**



**In aid of Ditcheat Church Monday 8<sup>th</sup>  
December**

**In Ditcheat Jubilee Hall**

**£2 entry - includes Refreshments**

**Doors open at 6.30pm**

**Eyes down 7pm**

**All Welcome**





## The Wildlife Group Update

### **Ravens vs Crows:**

When I was young, to me the Raven was a bird of lonely places and the cronk, cronk of its call conjured that image every time I heard it. About 20 years ago, more Ravens were spotted in this area and were a treat to see, now they are almost ubiquitous. How things have changed! On Salisbury plains huge "flocks" (or as their collective noun says "unkindnesses") of Ravens have been witnessed around sheep at lambing, where they prey on the newborn lambs. They are not a bird to trifle with.

With that in mind, is it just anecdotal or are there really fewer Crows around? Jackdaws don't seem to be affected, but the following experience may illustrate the possible decline in Crows. Two Crows were mobbing a Buzzard and along came a Raven who mobbed the Crows, they immediately left the scene, unlike the Buzzard. What was that all about?

### **What we have done:**

#### **The Family WLG Nature Ramble.**

I love the Autumn, with its colours lighting up the countryside and the leaves twirling down from the trees. The plants resorbing back the goodness from the foliage and leaving the toxins behind which gives us those colours. I love the translucence of some of those Autumn leaves and the opening up of the countryside to let more light in after the leaves have gone, wonderful!



I wasn't the only one excited about the Autumn, the parents and children that came on the ramble loved it too. Those sharp-eyed little ones really looked at their surroundings and some of the things we saw were put in my wicker basket and I photographed them on the tray above.

The ramble started at East Pennard church and went around in a loop to Batch Farm shop, a suitable place to end the walk and get some provisions and a host of conkers for later. Full event round up has been given to the FWLG members, but if you would like a copy, please just email me.

### Meeting Up:

David Bailey has very kindly offered **The View, at Wraxall** for our **WLG Social on Wednesday 21<sup>st</sup> January at 12.30**. Please **reserve** your place by email to me asap and by the 14<sup>th</sup> January at the latest, for what will no doubt be a popular event. Contact details below.

David and Neil Chance (Vineyard Manager) will explain their policy on wildlife, how it has improved the health and productivity of the vineyard and the quality of the wildlife. They will be glad to discuss this with the group.

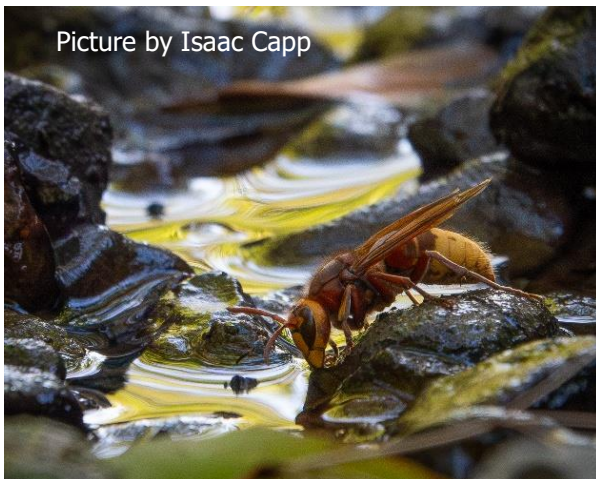
All participants of the WLG, whether you are on the Swallow survey, the Family WLG, Visit list, or even if you are thinking about joining, all are welcome.

#### WLG Photo Competition for December:

Checking that you have been paying attention to FTN articles.

Can you identify this insect? Answers by 9<sup>th</sup> January please.

Picture by Isaac Capp



**Photo competition results for November:** Congratulations to Daphne and Paul, the delicious Chanterelle needs careful identification before eating from the wild.

The lovely photo by David Baird, Source: [Geograph.org.uk](http://Geograph.org.uk), was missed from the hard copy magazine last month. Apologies to David.

### Contact information:

**Bridget Wadey** email: [thewildlifegroup@btinternet.com](mailto:thewildlifegroup@btinternet.com),  
or phone: 01749 860240. *You can follow our activities by:*

- **joining the Wildlife Group - it is free!**
- through the **Fosse Trinity News (FTN)** parish magazine
- **The FTN website:** [www.fossetrinitynews.co.uk](http://www.fossetrinitynews.co.uk)



## Ditchheat School

As the Autumn term draws to a close, I'm pleased to report the children have settled in really well and been enjoying the learning in their classrooms. They've taken part in many trips, sports events and other enrichment activities going on around the school.

The whole school took part in a learning behaviour values day when the children worked in house colours across the school, with older children helping the younger ones.

The aim was to explicitly promote the core values and positive behaviours that help establish effective learning and positive social interactions so all children can thrive in a calm and safe atmosphere.

They did activities involved with risk taking, peacekeeping, growth, mindset, communication and teamwork.



Willow class took a trip to Wells Cathedral during the Wells Annual Literature Festival. They had a question and answer session with popular adventure mystery writer, Sam Sedgman, (*Adventures on Trains* and *Isaac Turner Investigates*).

They also had the opportunity to buy signed copies of his books at the discounted price of £2.

The event, funded by the Festival thanks to the support of its sponsors and profits from ticket sales, is part of its year-round literary projects in local schools.

Willow class went to the Fleet Air Arm Museum as part of their World War II topic.

They were able to see real aircraft from the era and take a tour of the inside of a replica aircraft carrier to get a taste of life onboard during the time.



I'd like to wish all the children, their families, and the readers, a very happy Christmas and New Year.

Elaine Cosser, Head of School

## Recycle your tree, raise money



**St Margaret's** January 9<sup>th</sup> to 11<sup>th</sup>  
Hospice Care



The service is hassle-free: we collect your tree from the roadside in exchange for a donation, and local tree surgeons chip it down for use in farms, gardens, and paths.

Register your interest at:

[www.st-margarets-hospice.org.uk/event/christmas-tree-collection/](http://www.st-margarets-hospice.org.uk/event/christmas-tree-collection/)



## East Pennard and District Royal British Legion



As we come to the end of another year, we look back on 2025 as the year of notable anniversaries and their particular impact on our lives. I would suggest that the majority of us were born after end of World War II, some of us only just after. Had it not been

for things that happened eighty years ago, both in Europe and the Far East, our lives today might have been very different. So, we rightly celebrated both VE Day and VJ Day, as well as the annual Remembrance Day. At all of the ceremonies that took place in our area, people came to give thanks, and long may that continue.

Remembrance Sunday this



year was held at East Pennard and, despite the weather forecast not looking too promising, as usual the first part of the service was held outside the church and the rain held off. The Act of Remembrance outside included various of those attending being directly involved, which makes it all the more of a village commemoration.

On 1<sup>st</sup> November our Standard Bearer, Keith Poulton, attended a Drumhead Service at Wells Cathedral, along with many other bearers. The music was performed by the Central Band of The Royal British Legion.

At the conclusion of the service, a shower of petals was released, similar to that seen at the annual Festival of Remembrance at the Royal Albert Hall.

Charles Evans





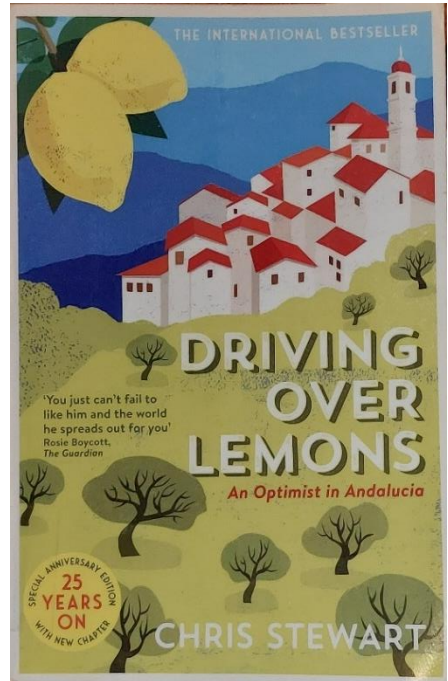
## Ditcheat Book Group

### ***Driving Over Lemons*** By Chris Stewart

Chris Stewart is described on the book's cover, as 'An Optimist in Andalucia'. He has written about how he and his wife decided to sink all their savings into buying a farm in Spain, south of Granada.

Financial constraints meant that the property, although beautifully situated on the side of a mountain, was inaccessible by road, without a water supply and had no electricity.

Chris had been living a 'more or less itinerant life' since playing guitar for Genesis on the first album; we never found out why he left. Subsequently, amongst other things, he became a sheep shearer, went to China to write 'The Rough Guide' and did a course in French cooking. His wife, Ana, ran a small horticultural business which probably, quite wisely, she decided to keep on.



To complicate matters the Spanish owner of El Valero stayed on, to show Chris how to manage the olive, almond and lemon groves, but his way of life, unchanged over many generations, proved difficult to live with. Once he eventually left it was other members of the small community who gave Chris advice and help with the various tricky problems of running a farm when the owners were such novices. Building a bridge across the river would have been something Stewart would not have been able to do on his own.

This book, published in 1999, enabled us to have an insight into a part of the world on the cusp of change from a traditional community-based way of life. The characters Stewart meets are described, often humorously but with affection, and what we all enjoyed was his absolute appreciation of how different life had become for him and his wife.

Vee Lees

## Sax and Sparkle

As winter draws in, Breathe Music brings a candlelit evening of warmth, wit and wonderful playing to the Tin Tabernacle in Alhampton. Saxophonist Edward Leaker joins violin, cello and piano for an hour of music that shimmers between classical elegance, jazz rhythm and festive glow.

Expect moments of lively brilliance and quiet stillness: a programme that moves from Latin sunshine to Parisian swing, from reflective stillness to joyful celebration. Presented in true Salon Sessions style—up close, informal and beautifully lit

Two performances, 5.30pm and 7.30pm.

Tickets £23 from <https://www.breathe-music.co.uk/concerts>



The East Pennard Community drop-in is going well!

Join us- Tuesday mornings between 10:30 & 12

Now held at All Saints Church East Pennard

Everyone welcome

Tea/coffee/ laughter and lively conversation.

# A TOUCH OF SAX AND SPARKLE



FEATURING  
EDWARD  
LEAKER

Tickets £23



**MONDAY 15TH DECEMBER**  
**5.30PM & 7.30PM**  
**ALHAMPTON TABERNACLE**

[www.breathe-music.co.uk](http://www.breathe-music.co.uk)



CALL  
**ROY**  
0777 0666 502

CALL  
**TREVOR**  
07818 092 065

# A GREAT DAY OUT FOR YOUR DOG

**SOMERSET DAYCARE  
& TRAINING**

- \* 20 years of professional dog care experience
- \* 5 acres of secure private field with direct access to woodland
- \* Heated cabin
- \* Dedicated puppy and small dogs field.
- \* Fully insured

DOGGY  
DAYCARE  
WITH PICK UP  
& DROP OFF  
£38 PER DAY



SOMERSET DOG CARERS

Please follow us DogDaddies\_somerset [www.DogDaddies.com](http://www.DogDaddies.com)



A man with a beard, wearing a green cap and a blue shirt, is harvesting tomatoes in a greenhouse. He is reaching up to pick a cluster of red tomatoes from a vine. The greenhouse is filled with many tomato plants, some with green and some with red fruit. The word "crop" is written in a large, yellow, cursive font across the top of the image.

# crop

SEASONAL SOMERSET PRODUCE  
DELIVERED EVERY FRIDAY



@CROP.MARKET

CROPMARKET.CO.UK



**Ditcheat Jubilee Hall**

# **FROST FAIR**



**Saturday Dec. 6th - 10.00am - 3.00pm**



**Seasonal Stalls  
Refreshments**



**Soft toys**

**Beeswax Candles**

**Jewellery**

**Wines**

**Handbell ringers**

**Preserves**

**Greetings cards**

**Cheeses**

**Lucky Dip**

**And our Christmas lights**



## **DITCHHEAT BIG SCREEN**

**BRIDGET JONES  
MAD ABOUT THE BOY**



**Ditcheat Jubilee Hall  
Friday 19th December**

**Doors open at 6.30pm for drinks & cake**

**STARTING AT 7.30PM**

**Renee Zellweger  
Hugh Grant  
Chiwetel Ejiofor  
Colin Firth**

**Scan the QR code  
or buy tickets at the door  
just £5.00**





You are warmly invited to come to a  
**Crib Service**  
**at**  
**4.30 p.m. on Christmas Eve**  
**Wednesday, 24<sup>th</sup> December**  
**at St Mary Magdalene Church, Ditchheat**

All are welcome to celebrate the journey of Christmas in a service of  
carols, readings, and gifts

***Please would children come already dressed as  
a character from the nativity story***

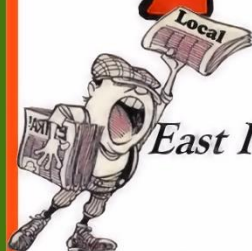


Looking for  
a Local Source of  
**Fruit Trees or Soft Fruit Bushes**

To plant this Autumn / Winter ?

Buy Locally!

**Pennard**  
**Plants Nursery**



*The Walled Garden*  
*East Pennard, Somerset BA4 6TP*

Order at [Pennardplants.com](http://Pennardplants.com) and we will let you know  
when your order is ready, so you can arrange pickup  
from the Nursery. We are open by appointment if  
you want to discuss your requirements!

Tel: 07968 193732

and  
you really must see our  
online range of Heritage & Heirloom  
Seeds by the packet !



**[www.pennardplants.com](http://www.pennardplants.com)**

HERITAGE SEEDS • EDIBLE PLANTS • FRUIT TREES & BUSHES





# Walk **100** miles with your Dog!

We're challenging you and your dog  
to walk **100 miles** in **January 2026**  
and help us raise vital funds.

Sign up for **FREE** and receive a  
handcrafted **doggy bandana!**

Sign up:



Visit: [st-margarets-hospice.org.uk](https://st-margarets-hospice.org.uk)

Proudly sponsored by:



Registered charity  
number: 279473



**St Margaret's**  
Hospice Care

# **BRUTON CHORAL SOCIETY**

**Musical Director: Barbara Jenkinson**

## **Christmas Concert**

**Christus Natus Est: Cecilia McDowall**  
**Carols & Festive Music**

**with guest performers**

**St Mary's Children's Choir**  
**Bruton Primary School Singers**

**Stringendo Ensemble**  
**Ashley Marshfield**  
**Soloists**

**MON 15 DECEMBER 7.30pm**  
**ST MARY'S BRUTON**

**£12 advance tickets, £15 on the day, children free**  
**including a glass of wine**  
**Bruton Convenience Store, 01749 813161**  
**or [www.bرتونchoralsociety.org.uk](http://www.bرتونchoralsociety.org.uk)**





## Pylle Village Hall Hire

We hope to run a few events next year, 2026, which we will advertise in this magazine. Keep reading!

We have dining equipment for sixty people and a good-sized car park. Perhaps you could hire the hall for a family meal or party and perhaps you need space for a particularly large hobby?! Would you like to organise an event that we could help with?

Let us know!

HALL HIRE FEES - £8.50 per hour or £7.50 per hour for 4 or more hours.

This includes hire of all the equipment.

Bookings for the hall – XXXXXX

Enquiries about activities – Jay Smith XXXXXX

Or see our Facebook page – Pylle Village Hall



*These are some of the wonderful toys you can use when you hire the hall.*

## Pylle Village Meal

A big thank you to Sir Michael Eavis for the wonderful evening at the Village Hall in October. The food was absolutely outstanding and the catering staff were incredibly efficient.

Pylle Village Hall Committee congratulate Sir Michael on his 90<sup>th</sup> birthday!

## **Minutes of Ditchheat Parish Council**

**23<sup>rd</sup> October 2025**

PRESENT: Chairperson - Councillor Hutton (RH) and Councillors Clark (HC), Pearce (RP), Annetts (PA), Sergeant (PS) and Evans (CE).

IN ATTENDANCE: Miss P Griffiths - Clerk to the Council.

PUBLIC PARTICIPATION – No members of the public present.

APOLOGIES FOR ABSENCE - Councillors Adams and Thring were received and approved.

MENDIP SOUTH DIVISION COUNCILLORS' REPORT – noted.

CODE OF CONDUCT – Declarations of interest and dispensations - None.

MINUTES – The minutes of the meeting held on 11<sup>th</sup> September 2025 – were approved and signed.

MATTERS ARISING - from the meeting held on 11<sup>th</sup> September 2025.

Alhampton speed restriction invoice from Somerset Council - The Clerk reported that the sign on leaving Alhampton toward Ditchheat would be changed to a derestricted sign. Also, the invoice had still not been received but was expected imminently.

Glastonbury Festival debriefing – on behalf of CT the Clerk reported that the traffic data is still being collated.

### **PLANNING**

Higher Farm – it was noted that in light of the report from RH following the meeting with the owners of Higher Farm about the future plans for the site, a letter has been sent to the Planning Department including the Enforcement team requesting that the planning requirements are looked at as a 'whole site' taking in to consideration the aggregate effect of all the activities on the site.

Structure being erected at or near Ditchheat Hill Farm – it was noted that following a report from a parishioner regarding what appears to be a large wooden structure being erected at the site this matter has been brought to the attention of the Planning Department. The Development Manager for Enforcement had confirmed that the structure was a storage unit for agricultural use, was the subject of an agricultural notification (2023/0973/AGB) and does not require planning permission.

In addition to the agenda RH reported that a variation application for Homeacres had been received by the PC that afternoon. In light of the PC's response to the original application all Councillors were asked to view the application and let the Clerk know as soon as possible but no later than 31<sup>st</sup> October if the matter should be considered at a Planning meeting on the 13<sup>th</sup> November.



## FINANCE

Resolved to approve the reconciliation of the bank accounts to 30<sup>th</sup> September 2025.

Balance of accounts – £27,495.63. as per the reconciliation of accounts.

The generous donations of £100.00 from Mrs Osborne and £50.00 from Laura and Chris Braithwaite to the Alhampton defibrillator fund noted.

The budget for 2026/2027 was discussed. There were no immediate suggestions from Councillors for specific additional items to be added to next year's budget. RH asked all Councillors to give further thought to this matter and send any suggestions to the Clerk for preparation of the draft budget which will be considered at the next meeting. However, the Clerk raised the matter of the old telephone kiosk in Alhampton which houses the defibrillator (AED). There are two areas of concern – one is that without warning the Community Heartbeat Trust appear to have terminated the Managed Solution Contract (MSC) which was entered into when the defibrillator was installed. This matter is being investigated but it may mean that in future all consumables include replacement batteries, pads etc will need to be funded locally when previously paid for under the MSC. The PC had agreed to underwrite any expenses if the local community despite best efforts failed to raise the necessary funds. In addition, the kiosk needs refurbishment and a recent estimate for preparation and repainting is in the region of £800 - £1,000 as it would take 4-5 days' work. The Clerk will investigate alternative funding options. PS suggested that members of the local community may well come forward with donations of either money or time. PS will put information on the PC Facebook page. It was accepted that this would need to be considered when finalising the budget and will be considered further at the next meeting.

The proposal from the Clerk to move the bank accounts from NatWest to the Unity Trust Bank was discussed briefly following the Clerk explaining the rationale for the change. Resolved that all Councillors should review the Unity Trust Bank online and contact the Clerk if necessary for more information in preparation for deciding at the next full meeting.

Resolved, in line with the PC's policy regarding donations, to refuse the request from Somerset Art Works (SAW) for a £30 contribution.

Approval of Parish Council payments and authority to sign cheques for the following:

Somerset Council – for emptying of waste bin in playground for Qtrs. 1 & 2 – part payment - £31.20. The Clerk explained that a second invoice had been received following an email confirming that the first invoice had undercharged for the period. Agree to pay the combined invoices total of £66.30.

Miss P Griffiths for Clerk's expenses for period 1<sup>st</sup> July to 30<sup>th</sup> September 2025 - £28.75.

RESOLVED - that the expenditure be approved, and the cheques issued.

HEALTH AND WELLBEING INITIATIVE – it was resolved that prior to the Parish Council considering applying for a grant to undertake a survey of needs in the parish supported by the SALC Health & Wellbeing Initiative that the Clerk should obtain further information about any costs associated with this above any grant that may be received and to establish the amount of work likely to be involved. The Clerk will then complete an application if the grant will cover the cost and that the survey will not result in a considerable amount of work falling on the Parish Council.

LCN South East meeting - PS reported that the main area of discussion was about the local Nature Recovery Strategy whose objectives are:

Set local priorities planting of trees, creation/preservation of wetlands, wildflower meadows, and river improvement; Guide funding and projects; Map important areas; identify most valuable habitats and species and where they could be restored or reconnected; Join efforts, support people and shape development; Restore nature; Inform climate adaptation plans

The public consultation and further information can be found using the following link: <https://www.somerset.gov.uk/planning-buildings-and-land/somersets-local-nature-recovery-strategy/>

In addition, the development of Yeovil town centre was discussed.

#### PLAYGROUND

It was noted that the work to reduce the tops of the 4 birch trees by approximately a third and raise the crowns has been organised.

Dog fouling and moving the waste bin from church steps to the playground - HC reported that having monitored the use of the dog waste bin by the Church steps and the litter bin in the playground recommended that the dog waste bin is not relocated as it is used frequently. Agreed to continue to monitor the playground bin and the dog waste bin at the Church steps. If circumstances change then consideration will be given to purchasing an additional bin for dog waste for the playground area. The Clerk will allocate an estimated cost for the purchase and emptying of an additional dog waste bin in the draft budget for 2026/2027.

Any matters of report – HC advised that having viewed the fence surrounding the toddlers' play area following the relatively recent repair work there would be no need to budget for its replacement next year. Agreed to continue to monitor the state of the fence.

#### HIGHWAYS

Briefing note on the Volunteer Highway Scheme – resolved that no further action required as the main use of volunteers relating to the highway is the annual litter pick. A risk assessment is undertaken each year and the road from Arthurs Bridge to Folly Corner is excluded from the litter pick as the risk is considered too high. South East LCN Highways Working Group – volunteer to attend in person or virtually. Next meeting 18<sup>th</sup> November. The Clerk agreed to attend the meeting on the 18<sup>th</sup> November 2025 virtually if possible.

Update on items/matters for repair previously reported. The Clerk reported that there had been a meeting with the Assistant Highways Manager (AHM), Chris Barber (CB) and the Clerk to agree what it is believed to be the cause of the flooding and erosion of the road edge on the Wraxall Road which has become a significant hazard. At the meeting the AHM acknowledged that the most likely cause was that the water mains work undertaken by Bristol Water had damaged at least three of the culverts under the road thus causing flooding and the erosion of the road edge. Agreed that the AHM would contact Bristol Water as a matter of urgency requesting that remedial action is taken. The PC agreed that the Clerk should write to Bristol Water requesting an update on when they expect the repairs to be completed.

#### FOOTPATHS, BRIDLEWAYS AND RIGHTS OF WAY.

Update on the 'lost' path that runs behind Moff Motors towards Castle Cary station which would allow pedestrian access from Alhampton – RH reported that the Friends of Haddon Wood were very keen on the project but would need to get agreement from the Woodland Trust. RH is planning to meet with the relevant landowners to discuss a way forward.

Grove Path resurfacing – noting to report. The Clerk will follow up.

Any matters for report – The Clerk will liaise with CE and the Rights of Way Officer for the delivery of three kissing gates to be used to replace some of the stiles in the parish.

PLAYING PITCH STRATEGY (PPS) AND A BUILT SPORTS FACILITIES STRATEGY (BSFS) – Councillors to review and feedback to the Clerk

#### ITEMS FOR INCLUSION ON AGENDA FOR THE NEXT MEETING:

- Date for litter pick.
- To consider changing the bank accounts to the Unity Trust Bank.

DATE of NEXT MEETING – 4<sup>th</sup> DECEMBER 2025 at 7.30 pm to be held in the Church Room, Ditchat.

# Yenstone Walling



Dry Stone Walling and Landscaping

All types of stone walling undertaken.

Patrick Houchen – DSWA member.



Reliable, professional service from a family business.

**01963 371123**

**[www.yenstonewalling.co.uk](http://www.yenstonewalling.co.uk)**



Corner Cottage, Alhampton, Somerset BA4 6PY  
Tanya Levy, Phone: 01749 860314 Mobile. 07779 093020  
**[www.levantcatering.com](http://www.levantcatering.com)**

**IMPRESS YOUR GUESTS WITH OUR SEASONAL LEVANTINE FEAST'S.  
SAVE TIME, MESS & STRESS ORDER BY WEDNESDAY, COLLECT ON FRIDAY  
ANYTIME BETWEEN 5-6 FROM LEVANT HQ**

**£22.00 per head**

**DIPS & DIPPERS, MAIN COURSES, VEGETARIAN & VEGAN OPTIONS and PUDDING**

## **LONG & SHORT TERM RENTALS**

The Forge -Boutique Accommodation Fully self-contained, sleeps 1 or a couple  
See availability on our Airbnb calendar and prices We can supply Levantine Ready

Meals and Artisan Breakfasts during your stay with prior notice  
**[airbnb.co.uk/hosting/listing/editor/47466247/details/custom-link](https://airbnb.co.uk/hosting/listing/editor/47466247/details/custom-link)**



## St Mary Magdalene, Ditcheat

	<u>Flowers</u>	<u>Brass</u>
December 7 <sup>th</sup> , 14 <sup>th</sup>	No Flowers	Lyn Steel
December 21 <sup>st</sup> & 27 <sup>th</sup>	Team Flowers	"
January 4 <sup>th</sup> & 11 <sup>th</sup>	"	"
January 18 <sup>th</sup> & 25 <sup>th</sup>	"	

We would welcome new members of the team for flowers and brass cleaning. If you are interested please contact Jess Leach on XXXXXX.

## East Pennard Church Flowers & Cleaning Rota

December	Helen Ablitt Hilary Tripp
January	Jane Allen Penny Kayes
February	Georgina Dearden Bridget Wadey



Reminder to the Windows team. Please have your windows decorated by the 19th December (wedding rehearsal at 4.00 on the Friday).

The PCC and I join in thanking all the members of the Flowers and Cleaning team for your wonderful and generous support. Without you all we would be a much-diminished offering to the community.

May you have a joyous and peaceful Christmas, and I wish you well in the coming year. With gratitude Bridget Tel: XXXXXX.

**Steve Bayley Decorators Ltd**

Friendly Local Professional Service

Interior/Exterior

Call: 07837 863338

e-mail:

stevebayleydecoratorsltd@gmail.com

**Send us your pictures!**

**If you've taken a local photograph that would look good on the front cover of the magazine please send it, with a title and your name, to:**  
[editor@fossetrinitynews.co.uk](mailto:editor@fossetrinitynews.co.uk)

## Rector's Note

Dear friends,

Writing in the middle of November, I am still in full remembrance mode, which is not just about Remembrance Day or Remembrance Sunday. At the beginning of the month we remembered the saints of the past, and the souls of all those who have gone before us, and whose lives may well have served as examples for us. Remembrance Sunday itself is a chance to remind ourselves that war starts in individual hearts and minds, from our playground days onwards. Sadly, violence is the shadow side of each of us and in some of us it becomes part of our daily lives.

So when we think about the birth of Jesus at Christmas (Christ-mass), we not only remember him as a little baby born in a stable in Bethlehem, but we think of the 30-odd years of his life growing up in a part of the world where the violence and hatred between nations continues to this day. In John's Gospel, Jesus gives us his final commandment, to love each other as he loved us. If we can find it in ourselves to love our neighbours, however odd or different from us they may be, then we as individuals can begin to set out on a path of peace for everyone.

In January, we will continue to pray for inter-racial peace as we remember the coming of the wise men at Epiphany to proclaim Jesus as King of the universe. May you receive peace in your hearts from the great King of Peace, and may you be able and willing to share it with others who need it too.

God bless you and yours.

Rosalind Paul (Retired Priest)



**YOUR STORY**  
*Matters*

*Turn Your Memories into a  
Beautiful Book*

- Life Story Packages
  - Ghostwriting
- Manuscript Editing
- Design & Print

*No writing experience needed*

*Mandy Bloom Memoirs*  
WRITING & EDITORIAL SERVICES  
SERVING SOMERSET & THE WEST COUNTRY

07969 333940 | [www.mandybloom.co.uk](http://www.mandybloom.co.uk)



**Church Services for December  
In the Parishes of Ditcheat with  
Alhampton, East Pennard, Pylle,  
Pilton, North Wootton and Croscombe**



**Sunday 7<sup>th</sup>**

9.30 am

**Advent 2**

**Joint Holy Communion at East Pennard**

**Sunday 14<sup>th</sup>**

10.00 am

6.30 pm

**Advent 3**

**Holy Communion at Ditcheat**

**Carol Service at Ditcheat**

**Sunday 21<sup>st</sup>**

10.00 am

6.30 pm

**Advent 4**

**Holy Communion at Alhampton**

**Carol Service at East Pennard**

**Wednesday 24<sup>th</sup>**

4.30 pm

11.00 pm

**Christmas Eve**

**Crib Service at Ditcheat**

**Midnight Communion at Ditcheat**

**Thursday 25<sup>th</sup>**

11.00 am

**Christmas Day**

**Holy Communion at East Pennard**

**Sunday 28<sup>th</sup>**

10.30 am

**Christmas 1**

**Zoom service**

**Church Services for January**

**Sunday 4<sup>th</sup>**

10.30 am

**Christmas 2/Epiphany**

**Joint Holy Communion at Pilton**

**Sunday 11<sup>th</sup>**

10.00 am

**Baptism of Christ**

**Holy Communion at Ditcheat**

**Sunday 18<sup>th</sup>**

10.00 am

**Epiphany 2**

**Holy Communion at East Pennard**

**Sunday 25<sup>th</sup>**

10 am

**Conversion of Paul**

**Holy Communion at Alhampton**

*Email contacts are on page 50*

PERSONAL DETAILS REDACTED



## **Fosse Trinity News**

**If you would like to write an article for the magazine, submit a photograph for the front cover (and win a recipe book) or a news item, let us know of any changes to the contact details or advertise with us, go to ([www.fossetrinitynews.co.uk](http://www.fossetrinitynews.co.uk)) for the details.**

**You can also view a copy of the current FTN, archived issues and downloadable page templates to use.**

**PERSONAL DETAILS REDACTED**

## Index of Advertisers

Catering, Dorset Delights	8	Keep Fit, Clare Torday Yoga	2
Cleaning, TLC (Bath)	8	Medical, Osteopath, Trevenen Pascoe	13
Decorator, Steve Bayley	45	Odd Jobs, Alistair Gillard	13
Dining, Levant Catering	44	Pub, Alhampton Inn	22/23
Dog Care, Dog Daddies	32	Roofing, Mark Curtis	17
Driver, Philip Saunders	16	Seamstress, Linda Medhurst	9
Driving Instruction, Richard's Tuition	9	Seasonal Produce - Crop, Higher Farm	33
Estate Agents, Lodestone	13	Solicitor, Purely Probate	9
Events, Pennard House	Back	Stone Mason, Thomas Kenrick	166
Funeral Directors, Forsey and Son	2	Stone Walling, Yenstone	44
Heating Services, Warm Welcome	16	Storage, Clear Space Self Storage	51
Home Maintenance, CH	19	Transport, Adepts	13
Home Maintenance, Mike Doyle	16	Tree Surgeon, Jody Osborne	9
Horticultural, Pennard Plants	36	Vineyard, Wraxall Vineyard	7
Internet, Wessex Internet	2	Writing Services, Mandy Bloom	46

### Legal Declarations

The opinions, beliefs and viewpoints expressed by the various authors and contributors to this magazine do not necessarily reflect the opinions, beliefs and viewpoints of the Fosse Trinity Benefice Parochial Church Councils, their officers or the FTN Editorial Team and no responsibility can be taken for the information given or views expressed in this magazine. In particular, no liability is accepted in relation to the contents of any third-party advertisement.

Contributors and advertisers must not include content unless they are certain it is copyright free or they have obtained permission from the copyright owner. The editors are unable to check content for this purpose and may seek redress if copyrighted material is included and resulting claims are made against the FTN by or on behalf of rights owners.

The FTN Privacy Policy may be found on the FTN website (<http://www.fossetrinitynews.co.uk/>) and is also available from the editor on request.

The FTN website is archived by the British Library every six months and added to the UK Web Archive (<https://www.webarchive.org.uk/>). This will ensure that the magazine will be digitally preserved for future generations. The British Library assumes no rights to content in archived websites and original rights' holders retain 100% of their copyright; there is also a 'notice and take down' policy whereby content can be removed if requested.

### Fosse Trinity News

Editor	Margy Cockburn	<a href="mailto:editor@fossetrinitynews.co.uk">editor@fossetrinitynews.co.uk</a>
Sub-editor	Tim Sanders	<a href="mailto:subeditor@fossetrinitynews.co.uk">subeditor@fossetrinitynews.co.uk</a>
Advertising	Steve Fisher	<a href="mailto:adverts@fossetrinitynews.co.uk">adverts@fossetrinitynews.co.uk</a>
Distribution	Chris Ringrow	<a href="mailto:distrib@fossetrinitynews.co.uk">distrib@fossetrinitynews.co.uk</a>
Web editor	Chris Ringrow	<a href="mailto:webed@fossetrinitynews.co.uk">webed@fossetrinitynews.co.uk</a>
Treasurer	John Clarke	<a href="mailto:treasurer@fossetrinitynews.co.uk">treasurer@fossetrinitynews.co.uk</a>

### General

Ditchat Parish Council	Pam Griffiths	<a href="mailto:clerk@ditcheatparishcouncil.org.uk">clerk@ditcheatparishcouncil.org.uk</a>
Community Police	TBA	



# CLEAR SPACE SELF STORAGE

## HOME & PERSONAL STORAGE



## BUSINESS STORAGE



## PACKING MATERIALS SHOP



● Clean, dry, secure storage accessible seven days per week in individual lockable rooms – everything from a small locker to the size of a garage.

**OPEN  
7 DAYS  
A WEEK**



Clear Space Self Storage, 1 Mendip Avenue, Shepton Mallet, Somerset BA4 4PE

Tel: 01749 715000

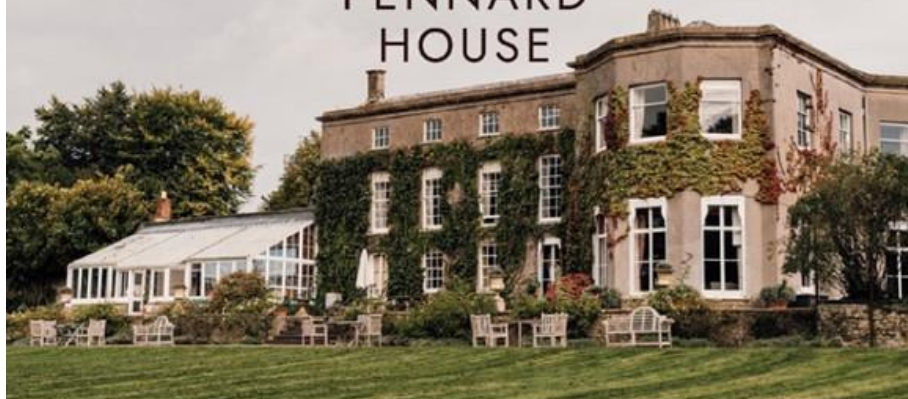
[www.clearspaceselfstorage.com](http://www.clearspaceselfstorage.com)

[info@clearspaceselfstorage.com](mailto:info@clearspaceselfstorage.com)



ESTD 1615

# PENNARD HOUSE



## WEDDINGS | EVENTS | MEETINGS

Get in touch to discuss your plans. 01749 860700

[info@pennardhouse.com](mailto:info@pennardhouse.com) | [www.pennardhouse.com](http://www.pennardhouse.com)

